



THE
ARC FLASH
PROTECTION
CATALOGUE

+44(0)1422 310456

sales@reecesafety.co.uk

www.reecesafety.co.uk

Welcome to the latest Reece Safety Arc Flash Catalogue

Our experience and strong reputation in supplying specialist equipment for safe isolation and live working has logically led us into supplying complementary arc flash protection products – the last line of defence. We have grown from a basic range into a full selection of this specialist PPE area that befits from our guidance in selecting the most appropriate products. We have the added benefit of offering the harder to source accessories, for hand and face protection, from our stocks and we often make up kits to suit users to both protect the visors and encourage their team to use the provided equipment. Our range runs from lower incident energy levels clothing through to higher level switching suits - we can supply clothing to satisfy all risk assessments, including arc Flash Visors, arc Flash Gloves and arc Flash Balaclavas.

I am delighted to add that we now can offer the highly specialist arc flash surveys where we will carry out a full assessment of your electrical network to determine the incident energy risks and attribute these with the PPE protection required.



Andy Graham
M.D. Reece Safety



WHAT IS ARC FLASH?

The danger by electrical arc (arc flash) is as old as the use of electric energy. An arc flash is the result of an electrical discharge through a gaseous medium between the electrical conductors with different potentials. Arc flash occurs if this discharge is caused by a short circuit or, as in most cases, due to errors from those carrying out the work.

Generally, the risk of a fault, and therefore an arc flash, is always present whenever work is performed on or near live parts of electric installations with sufficient electrical power. It does not matter whether the work place is in distribution networks for the supply of energy, in industrial networks or in building installations. A common myth is that arc flash is only applicable to high voltage working – most arc flash incidents arise in 415V systems.

If there is an incident, the consequences for the worker can be enormous. Apart from possible damage caused by the initial pressure wave, the blast of an explosion or the intense burst of blinding light, the thermal hazards alone are a cause of major damage. A large part of the electrical energy which feeds the arc flash is converted into thermal energy. This thermal energy is transmitted through heat convection (plasma clouds of hot gases and vaporised metal from the conductors) and through thermal radiation which can cause serious burns in case of accidents.

CONTENTS

ARC FLASH SURVEYS STANDARDS AND TESTING

PAGE 4-5

BASE LAYERS

PPE CATEGORY 1 - MIN ARC RATING OF 4 CAL/CM²

PAGE 6-9

SINGLE COLOUR COLLECTION

PPE CATEGORY 1 - MIN ARC RATING OF 4 CAL/CM²

PPE CATEGORY 2 - MIN ARC RATING OF 8 CAL/CM²

PAGE 10-11

HIGH VISIBILITY COLLECTION

PPE CATEGORY 2 - MIN ARC RATING OF 8 CAL/CM²

PAGE 12-16

TWO-TONE COLLECTION

PPE CATEGORY 2 - MIN ARC RATING OF 8 CAL/CM²

PAGE 17-21

SWITCHING SUITS

PPE CATEGORY 3 - MIN ARC RATING OF 25 CAL/CM²

PPE CATEGORY 4 - MIN ARC RATING OF 40 CAL/CM²

PAGE 22-23

WET WEATHER OUTER WEAR

PPE CATEGORY 2 - MIN ARC RATING OF 8 CAL/CM²

PPE CATEGORY 4 - MIN ARC RATING OF 40 CAL/CM²

PAGE 24-27

FACE AND HAND PROTECTION

PAGE 28-31

LIVE ELECTRICAL SAFETY EQUIPMENT

PAGE 32-37

SIZE GUIDES



PAGE 38-39

REECE ARC FLASH SURVEYS

Arc flash PPE is often referred to as the last line of defence. But how strong must this defence be?

This is a question every company has to answer for itself in order to conduct a risk assessment, but unfortunately finding the answer is not easy. Reece Safety sees itself not just as a supplier of products but as your partner who helps you to develop the right protection concept and to define the right strategy together with you. Our new arc flash studies service will provide you the answers needed to put in correct control measures and not waste money on the wrong things.

Our Arc Flash survey gives the following:

- Conducting short-circuit current calculations as a prerequisite
- Arc fault calculations for the selection of arc flash PPE
- Conducted according to IEEE 1584 and NFPA 70E
- Determination of the minimum ATPV values of PPE
- Calculation of all relevant workstations
- Opportunities for reduction of arc energy (protection settings)
- Creation of PPE concepts and PPE instructions
- Individual solutions adapted to the field of activity and electrical equipment
- Implementation of employee training courses

CALL OUR TEAM FOR MORE INFORMATION ON ANY OF OUR PRODUCTS OR FOR A QUOTATION!

+44(0)1422 310456

OR USE OUR LIVE CHAT ON OUR NEW WEBSITE

WWW.REECESAFETY.CO.UK!



ICONS AND STANDARDS



NFPA 70E

Standard for Electrical Safety in the Workplace



IEC 61482-2

Protective clothing against the thermal hazards of an electric arc



BS EN 1149-5

Protective clothing - Electrostatic Properties



BS EN ISO 11611

Protective clothing for use in welding and allied processes



BS EN ISO 11612

Clothing to protect against heat and flame

AST

ASTM F1959/F1959M-12

Standard test method for determining the arc rating of materials for clothing



SKINSAFE™

Tranemo SKINSAFE™ is the name of a multi-layer system designed to protect against flame, heat and electric Arc injuries.

RIS 3279

RIS-3279

Railway Group Standard - High Visibility Clothing



BS EN ISO 20471

High visibility clothing - testing methods and requirements



EN 407:2004

Protective glove against thermal risks (heat or fire)



EN 343

Protective against rain



EN 13034

Protective clothing against liquid chemicals

TESTING

UNDER EUROPEAN STANDARD IEC 61482-2: 2009 THERE ARE TWO TEST METHODS UNDERTAKEN TO ESTABLISH THE LEVEL OF PROTECTION ACROSS ARC FLASH CLOTHING.

OPEN ARC TEST METHOD: IEC 61482-1-1

This test method gives a Calorific Value for each garment - expressed as an ATPV (Arc Thermal Protection Value) or EBT Value (Energy Breakopen Threshold) - and this way, layered garment systems can be built up with testing results that correspond directly to your Arc Flash Risk Assessments.

BOX TEST METHOD: IEC 61482-1-2

This test method gives results of either 4kA (Class 1) or 7kA (Class 2) being a higher level of protection and is established in the European market. The garments in our single colour collection, high visibility collection and two tone collection are all tested this way **but the results cannot be directly related to an ATPV.**

BASE LAYERS



The layers next to the skin must not be from synthetic fabrics that could melt and stick to the skin in the event of an arc flash. Our range uses fabrics that keep the wearer comfortable and wick away the moisture and individually provide a layer of arc flash protection.

ARC FLASH PPE SELECTION

According to 2018 NFPA 70E page 36, Table 130.7 (C) (15) (c)

PPE CATEGORY 1

Minimum Arc Rating of 4cal/cm²



Bronze pricing

Simple garments meeting required standards to suit a lower budget.



Silver pricing

More advance garments with better fit and finish for greater user comfort.



Gold pricing

More technical features with more advanced materials for comfort and longer garment life.



LONG SLEEVE SHIRT BASELAYER 4.3 CAL/CM² NAVY

High quality construction and premium materials set this Flame-Resistant Anti-Static Long Sleeve T-Shirt aside from its competitors.

- CE certified
- 50+ UPF rated fabric to block 98% of UV rays
- Breathable fabric to draw moisture away from the body keeping the wearer cool, dry and comfortable
- Outstanding colour fastness
- Inherent flame resistant qualities will not diminish with washing
- Flame resistant ribbed cuff for added safety
- Protection against radiant, convective and contact heat
- Ribbed cuffs for warmth and comfort
- IEC 61482-2 Class 1 ATPV 4.3cal/cm²
- IEC 61482-1-2 Class 1
- ASTM F1959/F1959M-12 (HAF = 66%)
- EN 1149-5
- EN ISO 11612 (A1, B1, C1, F1)
- Material weight: 200g
- Sizes: XS to 5XL



Go to size guide PW for sizing

Replace ** with size for code

Code	Description
ELE9BL-TOP4.4**	Long Sleeve Shirt Base Layer 4.3cal/cm ² Navy

LEGGINGS BASELAYER 4.3 CAL/CM² NAVY

Designed for cooler conditions to keep the wearer warm, comfortable and safe. Elasticated waistband allows freedom of movement and the ribbed hem cuffs help trap in heat.

- CE certified
- Inherent flame resistant qualities will not diminish with washing
- Protection against radiant, convective and contact heat
- 50+ UPF rated fabric to block 98% of UV rays
- Breathable fabric to draw moisture away from the body keeping the wearer cool, dry and comfortable
- Outstanding colour fastness and shrinkage results
- Ribbed hem for a comfortable fit
- Fully elasticated waistband for ultimate comfort
- IEC 61482-2 Class 1 ATPV 4.3cal/cm²
- IEC 61482-1-2 Class 1
- ASTM F1959/F1959M-12 (HAF = 66%)
- EN 1149-5
- EN ISO 11612 (A1, B1, C1, F1)
- Material weight: 200g
- Sizes: S to 4XL



Go to size guide PW for sizing

Replace ** with size for code

Code	Description
ELE9BL-LEG4.4**	Leggings Base Layer 4.3cal/cm ² Navy

LONG SLEEVE T-SHIRT BASELAYER 4.9CAL/CM²

An unbelievably comfortable baselayer top, ideal for wearing under the single colour collection. Part of a two-garment set to be worn in conjunction with baselayer leggings as a matching set.

- Garment layering benefits for extra protection
- Extra soft Flame Resistant fabric
- Contrast threads
- Elastic fabric to fit all shapes & sizes
- Thumb hole for extra hand protection
- Extended back
- L Shaped seams for wearer comfort
- Fully machine washable
- IEC 61482-2 ATPV 4.9cal/cm²
- EN 1149-5
- EN ISO 11612 (A1, B1, C1)
- Material weight: 220g/m²
- Sizes: S to 4XL



Replace ** with size for code



Go to size guide PG for sizing

Code	Description
ELE9BL-TOP4.9**	Long Sleeve T-Shirt Baselayer 4.9cal/cm ²

LEGGINGS BASELAYER 4.9CAL/CM²

An unbelievably comfortable baselayer leggings/long johns, ideal for wearing under trousers or coveralls for added protection, comfort and warmth. Part of a two-garment set to be worn in conjunction with baselayer top as a matching set.

- Flame Resistant
- Garment Layering benefits for extra protection
- Extra soft fabric
- Contrast threads
- Elastic fabric to fit all shapes & sizes
- Fully machine washable
- IEC 61482-2 ATPV 4.9cal/cm²
- EN 1149-5
- EN ISO 11612 (A1, B1, C1)
- Material weight: 220g/m²
- Sizes: S to 4XL



Replace ** with size for code



Go to size guide PG for sizing

Code	Description
ELE9BL-LEG4.9*	Baselayer Leggings 4.9cal/cm ²

BASE LAYERS



These base layers are designed to be combined with the matched coveralls, jackets and trousers to benefit from fully tested layering which, in some cases, gives remarkable protection levels considering the individual thinner garment protection levels. The Tranemo Skinsafe™ system allows the wearer to work more effectively and for longer periods.

ARC FLASH PPE SELECTION

According to 2018 NFPA 70E page 36, Table 130.7 (C) (15) (c)

PPE CATEGORY 1

Minimum Arc Rating of 4cal/cm²



Bronze pricing

Simple garments meeting required standards to suit a lower budget.



Silver pricing

More advance garments with better fit and finish for greater user comfort.



Gold pricing

More technical features with more advanced materials for comfort and longer garment life.



LONG SLEEVE T-SHIRT BASELAYER 5.5CAL/CM²

Inherent Flame Retardant long sleeved T-shirt underwear in Merino wool/FR viscose tricot.

SKINSAFE™ tested

- Round neck
- Extended back
- IEC 61482-2 Class 1 ATPV 5.5cal/cm²
- EN ISO 11612 (A1 +A2, B1, C1, F1)
- EN 1149-5
- Material weight: 200g/m²
- Sizes: XXS to 4XL



Replace ** with size for code



Go to size guide TN for sizing



Code	Description
ELE9BLMER-TOP5.5**	Long Sleeve T-Shirt Baselayer 5.5cal/cm ²

LONG JOHNS 5.5CAL/CM²

Inherent Flame Retardant long johns in Merino wool/FR viscose tricot.

SKINSAFE™ tested

- Elasticated waist
- IEC 61482-2 Class 1 ATPV 5.5cal/cm²
- EN 1149-5
- EN ISO 11612 (A1 +A2, B1, C1, F1)
- Material weight: 200g/m²
- Sizes: XXS to 4XL



Replace ** with size for code



Go to size guide TN for sizing



Code	Description
ELE9BLMER-LEG5.5**	Long Johns 5.5cal/cm ²

LONG SLEEVE T-SHIRT BASELAYER 7.0CAL/CM²

Inherent Flame Retardant t-shirt underwear with long sleeves in a soft tricot.

SKINSAFE™ tested

- Round neck and long sleeves
- IEC 61482-2 Class 1 ATPV 7.0cal/cm²
- EN 1149-5
- EN ISO 11612 (A1, B1, C1, F1)
- Material weight: 235g/m²
- Sizes: XXS to 3XL, 5XL and 7XL



Replace ** with size for code



Go to size guide TN for sizing



Code	Description
ELE9BL-TOP7.0**	Long Sleeve T-Shirt Baselayer 7.0cal/cm ²

LONG JOHNS 7.0CAL/CM²

Inherent Flame Retardant long johns in a soft tricot.

SKINSAFE™ tested

- Elasticated waist
- IEC 61482-2 Class 1 ATPV 7.0cal/cm²
- EN 1149-5
- EN ISO 11612 (A1, B1, C1, F1)
- Material weight: 235g/m²
- Sizes: XXS-3XL, 5XL and 7XL



Replace ** with size for code



Go to size guide TN for sizing



Code	Description
ELE9BL-LEG7.0**	Long Johns 7.0cal/cm ²

CHECK OUT OUR WEBSITE FOR ALL PRODUCT PRICES - WWW.RECESAFETY.CO.UK



SINGLE COLOUR COLLECTION



Not all work is carried out needing high visibility stripes to protect the worker. Some work is carried out in facilities management amongst hotels and housing where blending into the environment is far more important. Dark navy is the single colour and in some cases the garments can be layered up to give higher protection.

ARC FLASH PPE SELECTION

According to 2018 NFPA 70E page 36, Table 130.7 (C) (15) (c)

PPE CATEGORY 1

Minimum Arc Rating of 4cal/cm²

PPE CATEGORY 2

Minimum Arc Rating of 8cal/cm²



Bronze pricing

Simple garments meeting required standards to suit a lower budget.



Silver pricing

More advance garments with better fit and finish for greater user comfort.



Gold pricing

More technical features with more advanced materials for comfort and longer garment life.



POLO SHIRT 7.0 CAL/CM²

Premium long sleeved polo shirt constructed using Pique Flame Resistant fabric.

- Enclosed stud packet
- Breathable with good moisture management
- IEC 61482-2 Class 1 ATPV 7cal/cm²
- EN 1149-5
- EN ISO 11612 (A1, B1, C1, F1)
- Material weight: 210gms
- Sizes - S-4XL
- Tested with ELE9SW14.4 to give 31.0 cal/cm²



Replace ** with size for code



Go to size guide PG for sizing

Code	Description
ELE9P07.0**	Arc Flash Navy Polo Shirt

JACKET 9.5 CAL/CM²

Jacket featuring reflective tape and lightweight Flame Resistant fabric. CE Certified for Arc Flash protection to Class 1 and 9.5 cal/cm².

- Vertical chest pocket with zipper
- Gas monitor loop
- 5cm Flame Resistant Anti Static Reflective Tape
- Flame Resistant zipper - CE Certified
- Triple stitched side seams
- IEC 61482-2 Class 1 ATPV 9.5cal/cm²
- EN 1149-5
- EN ISO 11612 (A1, B1, C1)
- EN ISO 11611 (Class 1 A1)
- Material weight: 250g/m²
- Sizes - M-3XL



Replace ** with size for code



Go to size guide PG for sizing

Code	Description
ELE9JART9.5**	Arc Flash Navy Jacket

COMBAT TROUSERS 9.5 CAL/CM²

Combat pocket trousers with improved fit. CE Certified for Arc Flash protection to Class 1 and 9.5cal/cm².

- Flame Resistant zipper - CE Certified
- Triple stitched side seams
- IEC 61482-2 Class 1 ATPV 9.5cal/cm²
- EN 1149-5
- EN ISO 11612 (A1, B1, C1)
- EN ISO 11611 (Class 1 A1)
- Material weight: 250g/m²
- Sizes: 32"-44" Regular Leg (32")



Replace ** with size for code



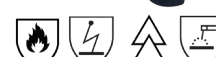
Go to size guide PG for sizing

Code	Description
ELE9TRCOM9.5**	Arc Flash Navy Trousers

COMBAT TROUSERS 12.8 CAL/CM²

Combat trousers offers superb comfort and durability for workers.

- Flame Resistant zipper - CE Certified
- Reinforced crotch
- Reinforced long hem
- Flame Resistant knee pads (available separately)
- IEC 61482-2:2009 Class 1 ATPV 12.8cal/cm²
- EN 1149-5
- EN ISO 11612 (A1, B1, C1, F1)
- Material weight: 300gms
- Sizes: 32"-42" Short Leg (30"), 32"-52" Regular Leg (32"), 32"-44" Tall Leg (34")



Replace ** with size for code



Go to size guide PG for sizing

Code	Description
ELE9TRCOM12.8**	Arc Flash Navy Trousers

SWEATSHIRT 14.4 CAL/CM²

Premium Flame Resistant sweatshirt constructed using jersey with brushed fleece inner for warmth.

- Breathable with good moisture management
- 5cm stretch rib hem - best fit around the waist
- IEC 61482-2 Class 1 ATPV 14.4cal/cm²
- EN 1149-5
- EN ISO 11612
- Material weight: 320gms
- Sizes - M-3XL
- Tested with ELE9P07.0 to give 31.0cal/cm²



Replace ** with size for code



Go to size guide PG for sizing

Code	Description
ELE9SW14.4**	Arc Flash Navy Sweatshirt

COVERALL + REFLECTIVE TAPE 15.0 CAL/CM²

Protection against thermal effects of an electric arc.

- Flame resistant and antistatic
- IEC 61482-2 Class 1 ATPV 15.0cal/cm²
- EN 1149-5
- EN ISO 11612
- EN ISO 11611
- ATEX area compliance with requirement of INERIS
- EN 13034:2005
- Sizes - S-6XL/4XL-6XL available on special order



Go to size guide AF for sizing



Replace ** with size for code

Code	Description
ELE9CR12**	Coverall 15 cal/cm ²

HIGH VISIBILITY



Our high visibility range is primarily aimed at the rail, aggregates and construction industries where the high viz orange is the familiar standard. The silver and gold standard garments meet the RIS 3279 standard for high visibility with the required horizontal and vertical stripe combination. All garments meet the PPE category 2 level where there is a minimum requirement of 8cal/cm².

ARC FLASH PPE SELECTION

According to 2018 NFPA 70E page 36, Table 130.7 (C) (15) (c)

PPE CATEGORY 2

Minimum Arc Rating of 8cal/cm²



Bronze pricing

Simple garments meeting required standards to suit a lower budget.



Silver pricing

More advance garments with better fit and finish for greater user comfort.



Gold pricing

More technical features with more advanced materials for comfort and longer garment life.



HIGH VISIBILITY ORANGE JACKET 13.6 CAL/CM²

This jacket is constructed with high visibility reflective tape double stitched for enhanced durability.

- CE certified
- Guaranteed flame resistance
- Protection against radiant, convective and contact heat
- Certified protection against molten metal splash
- Class 2 welding protection
- Flame resistant industrial wash tape
- Radio loops for easy clipping
- Concealed stud and zip fastening
- 50+ UPF rated fabric to block 98% of UV rays
- 5 pockets for ample storage
- IEC 61482-2 Class 1 ATPV 13.6cal/cm²
- IEC 61482-1-2 Class 1
- ASTM F1959/F1959M-12 (HAF=82%)
- EN 1149-5
- EN ISO 11612 (A1+A2, B1, C1, E2, F1)
- EN ISO 11611 Class 2 (A1+A2)
- Material weight 350g
- Sizes: S-4XL



Go to size guide PW for sizing

Replace ** with size for code

Code	Description
ELE9HVO-JA13.6**	Orange Jacket 13.6cal/cm ²

HIGH VISIBILITY ORANGE TROUSERS 13.6 CAL/CM²

This trouser is constructed with high visibility reflective tape double stitched for enhanced durability.

- CE certified
- Guaranteed flame resistance for life of garment
- Protection against radiant, convective and contact heat
- Certified protection against molten metal splash
- Flame resistant industrial wash tape
- Two tier knee pad pockets allowing two positioning options
- 50+ UPF rated fabric to block 98% of UV rays
- Durable, strong and long lasting brass zip
- Half elasticated waist for a secure and comfortable fit
- 7 pockets for ample storage
- IEC 61482-2 Class 1 ATPV 13.6cal/cm²
- IEC 61482-1-2 Class 1
- ASTM F1959/F1959M-12 (HAF=82%)
- EN 1146-5
- EN ISO 11612 (A1+A2, B1, C1, E2, F1)
- EN ISO 11611 (Class 2 A1+A2)
- Material Weight: 350g
- Sizes: S-4XL Regular leg (31")



Go to size guide PW for sizing

Replace ** with size for code

Code	Description
ELE9HVO-TR13.6**	Orange Trousers 13.6cal/cm ²

HIGH VISIBILITY ORANGE COVERALL 13.6 CAL/CM²

This coverall is perfect for the demands of the offshore industry.

- CE certified
- Guaranteed flame resistance for life of garment
- Protects against radiant and convective heat
- Certified protection against molten metal splash
- Class 2 welding protection
- Flame resistant industrial wash tape
- Radio loops for easy clipping of a radio
- Concealed two-way front brass zip
- Hook and loop cuffs for a secure fit
- Two tier knee pad pockets allowing two positioning options
- IEC 61482-2 Class 1 ATPV 13.6cal/cm²
- IEC 61482-1-2 Class 1
- ASTM F1959/F1959M-12 (HAF=82%)
- EN ISO 11612 (A1+A2, B1, C1, E2, F1)
- EN ISO 11611 (Class 1, Class 2 A1+A2)
- Material weight: 350g
- Sizes: XS-5XL Regular leg (31")
S-3XL Tall leg (33")



Go to size guide PW for sizing

Replace ** with size for code

Code	Description
ELE9HVO-COV13.6**	Orange Coverall 13.6cal/cm ²

HIGH VISIBILITY ORANGE BIB AND BRACE 13.6 CAL/CM²

This bib and brace is constructed with high visibility reflective tape double stitched for enhanced durability.

- Guaranteed flame resistance for life of garment
- Certified protection against molten metal splash
- Flame resistant industrial wash tape
- 50+ UPF rated fabric to block 98% of UV rays
- IEC 61482-2 Class 1 ATPV 13.6cal/cm²
- IEC 61482-1-2 Class 1
- ASTM F1959/F1959M-12 (HAF=82%)
- EN 1149-5
- EN ISO 11612 (A1+A2, B1, C1, E2, F1)
- EN ISO 11611 (Class 1, Class 2 A1+A2)
- Material weight: 350g
- Size - S-4XL Regular Leg (31")



Go to size guide PW for sizing

Replace ** with size for code

Code	Description
ELE9HVO-BIB13.6**	Orange Bib and Brace 13.6cal/cm ²

HIGH-VISIBILITY JACKET 9.8 CAL/CM²

This jacket is developed to meet the requirements of RIS-3279-TOM.

- Vertical chest pocket with zipper
- Gas monitor loop
- 5cm Flame Resistant Anti Static Reflective Tape
- Flame Resistant zipper - CE Certified
- Triple stitched side seams
- IEC 61482-2 ATPV 9.8cal/cm²
- EN 1149-5
- EN ISO 11612 (A1, B1, C1, E1, F1)
- EN ISO 20471 (Class 3)
- EN ISO 11611 (Class 1, A1)
- RIS 3279-TOM
- Material weight: 310 gms
- Size - S-4XL



Replace ** with size for code

Go to size guide PG for sizing

Code	Description
ELE9HVO-JA9.8**	Hi-Vis Jacket 9.8cal/cm ²

HIGH-VISIBILITY TROUSERS 9.8 CAL/CM²

Designed to be worn in conjunction with hi vis jacket for workers on or near the trackside requiring garments certified to RIS-3279-TOM.

- Flame Resistant zipper - CE Certified
- Triple stitched side seams
- Reinforced crotch
- IEC 61482-2:2009 ATPV 9.8cal/cm²
- EN 1149-5
- EN ISO 11612 (A1, B1, C1, E1, F1)
- EN ISO 11611 (Class 1, A1)
- EN ISO 20471 (Class 1)
- RIS-3279-TOM
- Material weight: 310 gms
- Sizes: 32" - 42" Short Leg (30")
- 32" - 52" Regular Leg (32")
- 32"-44" Tall Leg (34")



Replace ** with size for code

Go to size guide PG for sizing

Code	Description
ELE9HVO-TR9.8**	Hi-Vis Trousers 9.8cal/cm ²

HIGH VISIBILITY SWEATSHIRT 21.6 CAL/CM²

Hi vis and Flame Resistant sweatshirt developed to meet the requirements of RIS-3279-TOM.

- Arc Flash and Flame Resistant fabric
- Breathable with good moisture management
- 5cm stretch rib hem - best fit around the waist
- IEC 61482-2 ATPV 21.6cal/cm²
- EN ISO 16112 (A1, B1, C1)
- EN ISO 20471
- RIS-3279-TOM
- Material weight: 430gms
- Size - S-4XL



Replace ** with size for code

Go to size guide PG for sizing

Code	Description
ELE9HVO-SW21.6**	Hi-Vis Sweatshirt 21.6cal/cm ²

HIGH VISIBILITY COVERALL 9.8CAL/CM²

Designed for workers on or near the trackside requiring garments certified to RIS-3279-TOM.

- Gas monitor loop - secure fixing point
- Visual EN Standards icon system
- 5cm Flame Resistant Anti Static Reflective Tape
- Flame Resistant zipper - CE Certified
- IEC 61482-2 ATPV 9.8cal/cm²
- EN 1149-5
- EN ISO 11612 (A1, B1, C1, E1, F1)
- EN ISO 20471 (Class 3)
- EN ISO 11611 (Class 1 A)
- RIS-3279-TOM
- Material weight: 310 gms
- Sizes: S-4XL Regular leg (31")
- M-2XL Tall leg (33")



Replace ** with size for code Go to size guide PG for sizing

Code	Description
ELE9HVO-COV9.8**	Hi-Vis Coverall 9.8cal/cm ²

AT REECE OUR DEDICATED TEAM ARE ON HAND TO PROVIDE THE BEST SUPPORT TO ALL OF OUR CUSTOMERS. IF YOU'RE NOT SURE CONTACT US FOR FURTHER INFORMATION ON ANY OF OUR ARC FLASH PROTECTION RANGE.

CALL +44(0)1422 310456 OR EMAIL SALES@REECESAFETY.CO.UK

NON METAL HI-VIZ JACKET WITH REFLECTIVE TAPE 8.7 CAL/CM²

Non-Metal Hi-Vis jacket in double weave fabric with comfort finish on the inside, developed for the railway industry.

SKINSAFE™ tested

- Extended back
- Concealed front zip and press stud
- Arm ventilation
- Chest pockets with flaps
- Loop for radio/gas monitor under right chest pocket flap
- Side pockets with flaps
- Two inside pockets with flaps
- Inside mobile phone pocket
- Draw cord at the bottom of the jacket
- Adjustable cuffs
- IEC 61482-2 Class 1 ATPV 8.7cal/cm²
- EN 1149-5
- EN ISO 11612 (A1, B1, C1, F1)
- EN ISO 20471 (Class 3)
- EN ISO 11611 (Class 2 A1)
- EN 13034
- RIS-3279-TOM
- Material Weight: 335g/m²
- Sizes: XS-4XL



Go to size guide
TN for sizing



Replace ** with size for code

Code	Description
ELE9HVO-JA8.7**	Non-Metal Hi-Vis Jacket with Reflective Tape 8.7cal/cm ²

NON METAL HI-VIZ TROUSERS WITH REFLECTIVE TAPE 8.7 CAL/CM²

Non-Metal Hi-Vis jacket in double weave fabric with comfort finish on the inside, developed for the railway industry.

SKINSAFE™ tested

- Front pockets
- Hip pockets with flap
- Cargo pockets with flaps
- Shaped knees with adjustable inside kneepad pockets
- IEC 61482-2 Class 1 ATPV 8.7cal/cm²
- EN 1149-5
- EN ISO 11612 (A1, B1, C1, F1)
- EN ISO 11611 (Class 2 A1)
- EN ISO 20471 (Class 2)
- EN 13034
- RIS-3279-TOM
- Material Weight: 335g/m²
- Sizes:
34"-48" Short Leg (30")
30"-50" Regular Leg (32")
32"-40" Tall Leg (34")



Go to size guide
TN for sizing



Replace ** with size for code

Code	Description
ELE9HVO-TR8.7**	Non-Metal Hi-Vis Trousers with Reflective Tape 8.7cal/cm ²

NON-METAL HI-VIZ COVERALL WITH REFLECTIVE TAPE 8.7 CAL/CM²

Non-Metal Hi-Vis jacket in double weave fabric with comfort finish on the inside, developed for the railway industry.

SKINSAFE™ tested

- Concealed front zip and press stud closing
- Arm ventilation
- Left chest vertical pocket with zip
- Right chest pocket with flap and loop for radio/gas monitor
- Side pockets with flaps and hidden access
- Cargo pockets with flaps to legs
- Shaped knees with adjustable inside kneepad pockets
- Hip pockets with flaps
- Adjustable waistband
- Adjustable cuffs
- Zip in legs from knee to ankle
- IEC 61482-2 Class 1 ATPV 8.7cal/cm²
- EN 1149-5
- EN ISO 11612 (A1, B1, C1, F1)
- EN ISO 20471 (Class 3)
- EN ISO 11611 (Class 2 A1)
- EN 13034
- RIS-3279-TOM

- Material Weight: 335g/m²
- Sizes:
S-5XL Regular Leg (32")
M-3XL Tall Leg (34")

Replace ** with size for code



Go to size guide
TN for sizing

Code	Description
ELE9HVO-COV8.7**	Non-Metal Hi-Vis Coverall with Reflective Tape 8.7cal/cm ²



TWO TONE COLLECTION



Very popular with power generation and wind turbines maintenance. The two tone collection has a good range of protection with varying styles and proportions of high visibility. The heavier weight materials of 350g/cm² give excellent heavy use protection where the risk of molten metal spatter is higher with foundries or welding.

ARC FLASH PPE SELECTION

According to 2018 NFPA 70E page 36, Table 130.7 (C) (15) (c)

PPE CATEGORY 2

Minimum Arc Rating of 8cal/cm²



Bronze pricing

Simple garments meeting required standards to suit a lower budget.



Silver pricing

More advance garments with better fit and finish for greater user comfort.



Gold pricing

More technical features with more advanced materials for comfort and longer garment life.



TWO TONE COVERALL 13.6 CAL/CM²

This comfortable garment offers protection against multiple risks including exposure to heat, fire, chemicals, electrical arcs and welding.

- CE certified
- Guaranteed flame resistance for life of garment
- Protection against radiant, convective and contact heat
- Certified protection against molten metal splash
- Flame resistant industrial wash tape
- Two tier knee pad pockets
- Radio loops for easy clipping of a radio
- Triple-stitched seams for extra durability
- 50+ UPF rated fabric to block 98% of UV rays
- Durable, strong and long lasting brass zip
- IEC 61482-2 Class 1 ATPV 13.6cal/cm²
- IEC 61482-1-2 Class 1
- ASTM F1959/F1959M-12
- EN 1149-5
- EN ISO 11612 (A1+A2, B1, C1, E3, F1)
- EN ISO 20471 (Class 3)
- EN ISO 11611 (Class 1 A1+A2)
- EN 13034 Type 6
- Material weight 1.84kg-2.1kg
- Sizes: S-4XL Regular Leg (31")



Go to size guide PW for sizing



Code	Description
ELE9TT-COV13.6**	Yellow/Navy Two Tone Coverall 13.6cal/cm ²

Replace ** with size for code

TWO TONE TROUSERS 12.0 CAL/CM²

Best selling work trouser featuring two tone design for improved visibility.

- Flame Resistant zipper - CE Certified
- Triple stitched side seams
- Reinforced crotch
- Visual EN Standards icon system
- IEC 61482-2 Class 1 ATPV 12.0cal/cm²
- EN 1149-5
- EN ISO 11612 (A1, B1, C1, D1, E1, F1)
- EN ISO 11611 (Class 1 A1)
- EN 13034
- Material weight: 300g/m²
- Sizes:
- 32"-42" Short Leg (30")
- 32"-52" Regular Leg (32")
- 32"-44" Tall Leg (34")



Go to size guide PG for sizing



Code	Description
ELE9TT-TR12.0**	Two Tone Trousers 12.0cal/cm ²

Replace ** with size for code

TWO TONE JACKET 12.0 CAL/CM²

Best selling work jacket featuring two tone design for improved visibility.

- Vertical chest pocket with zipper
- Gas monitor loop
- 5cm Flame Resistant Anti Static Reflective Tape
- Flame Resistant zipper - CE Certified
- Triple stitched side seams - Lifetime quality assurance
- IEC 61482-2 Class 1 ATPV 12.0cal/cm²
- EN 1149-5
- EN ISO 11612 (A1, B1, C1, F1)
- EN ISO 11611 (Class 1 A1)
- BS EN 13034
- Material weight: 300g/m²
- Size - S-4XL



Go to size guide PG for sizing



Replace ** with size for code

Code	Description
ELE9TT-JA12.0**	Two Tone Jacket 12.0cal/cm ²

TWO TONE COVERALL 12.0 CAL/CM²

Multi-Norm premium quality coverall designed for workers in the Petrochemical, Utility and Power Generation industries.

- Flame Resistant fabric and Arc Flash protection
- Gas monitor loop - secure fixing point
- Visual EN Standards icon system
- 5cm Flame Resistant anti static reflective tape - double stitched for longer life
- Flame resistant zippers - CE Certified
- Mandarin collar - maximum neck protection
- Triple stitched side seams
- IEC 61482-2:Class 1 ATPV 12.0cal/cm²
- EN 1149-5
- EN ISO 11612 (A1, B1, C1, D1, F1)
- EN ISO 11611 (Class 1 A1)
- EN ISO 20471 (Class 3)
- Material weight: 240g/m²
- Sizes:
- 38"-60" Regular Leg (31.5")
- 40"-52" Tall Leg (33")



Go to size guide PG for sizing



Code	Description
ELE9TT-COV12.0**	Two Tone Coverall 12.0 cal/cm ²

Replace ** with size for code

NON-METAL TWO TONE JACKET 9.5CAL/CM²

Non-Metal jacket with increased visibility in a light fabric with a comfortable feel and good tear resistance.

SKINSAFE™ tested

- Concealed front zip and press studs
- Extended back
- Chest pockets with flaps
- Sleeve pocket with flap, hidden keyring holder and strap for ID pocket
- Side pockets with flaps
- Two inside pockets with flaps
- Inside mobile phone pocket
- Draw cord at the bottom of the jacket
- Adjustable cuffs
- Reflective stripes on shoulders and sleeves
- IEC 61482-2 Class 1 ATPV 9.5cal/cm²
- EN 1149-5
- EN ISO 11612 (A1+A2, B1, C1, E1, F1)
- EN ISO 11611 (Class 1, A1+A2)
- EN 13034
- Material weight: 260g/m²
- Sizes: XS-3XL



Go to size guide
TN for sizing



Replace ** with size for code

Code	Description
ELE9TT30-JA9.5**	Non Metal Two Tone Jacket 9.5cal/cm ²

NON-METAL ARC RATED TROUSERS 9.5CAL/CM²

Non-Metal Trousers in a light fabric with a comfortable feel and good tear resistance.

SKINSAFE™ tested

- Front pockets
- Hip pockets with flaps
- Cargo pocket with flap, mobile phone pocket, hidden keyring holder and tool strap
- Ruler pocket
- Shaped knees with adjustable inside kneepad pockets
- Reflective stripes on legs
- IEC 61482-2: Class 1 ATPV 9.5cal/cm²
- EN 1149-5
- EN ISO 11612 (A1+A2, B1, C1, E1, F1)
- EN ISO 11611 (Class 1, A1+A2)
- EN 13034
- Material weight: 260g/m²
- Sizes: 34"-48" Short Leg (30")
30" -50" Regular Leg (32")
32"-40" Tall Leg (34")



Go to size guide
TN for sizing



Replace ** with size for code

Code	Description
ELE9TT20-TR9.5**	Non Metal Arc Rated trousers 9.5cal/cm ²

NON-METAL TWO TONE COVERALL 9.5CAL/CM²

Non-Metal boilersuit with increased visibility in a light fabric with a comfortable feel and good tear resistance.

SKINSAFE™ tested

- Concealed zip closing
- Chest pockets with flaps
- Adjustable waistband
- Actionback for free movement
- Adjustable cuffs
- Side pockets with hidden side access
- Shaped knees with adjustable inside kneepad pockets
- Hip pockets with flaps
- Zip in legs from knee to ankle
- Reflective stripes on shoulders and sleeves
- IEC 61482-2 Class 1 ATPV 9.5cal/cm²
- EN 1149-5
- EN ISO 11612 (A1+A2, B1, C1, E1, F1)
- EN ISO 11611 (Class 1, A1+A2)
- EN 13034
- Material weight: 260g/m²
- Sizes: XS-5XL Regular Leg (32")
M-5XL Tall Leg (34")



Go to size guide
TN for sizing



Code	Description
ELE9TT10-COV9.5**	Non-Metal Two Tone Coverall 9.5cal/cm ²

NON-METAL HIGH-VIS TWO TONE COVERALL 9.5CAL/CM²

Non-Metal Hi-Vis boilersuit in a light fabric with a comfortable feel and good tear resistance.

SKINSAFE™ tested

- Concealed zip closing
- Chest pockets with flaps
- Adjustable waistband
- Actionback for free movement
- Sleeve pocket with flap
- Adjustable cuffs
- Side pockets with hidden side access
- Shaped knees with adjustable inside kneepad pockets
- Hip pockets with flap
- Ruler pocket
- Zip in legs from knee to ankle
- Contrast stitching
- IEC 61482-2 Class 1 ATPV 9.5cal/cm²
- EN 1149-5
- EN ISO 11612 (A1+A2, B1, C1, F1)
- EN ISO 20471 (Class 3)
- EN 13034
- Material weight: 260g/m²
- Sizes: XS-5XL Regular Leg (32")
M-5XL Tall Leg (34")



Go to size guide
TN for sizing

Replace ** with size for code

Code	Description
ELE9TT19-COV9.5**	Non-Metal High-Vis Two Tone overall 9.5cal/cm ²

TWO TONE JACKET 15.0CAL/CM²

Jacket with increased visibility, in a material with good protection against several molten metals and highest possible protection against molten iron.

SKINSAFE™ tested

- Concealed front zip and button closing
- Extended back
- Chest pockets with concealed zip
- Roomy side pockets with flaps.
- Inside pocket
- Draw cord at waist
- Reflective stripes around sleeves, over shoulder and on back
- Contrast stitching
- IEC 61482-2 Class 1 ATPV 15.0cal/cm²
- EN 1149-5
- EN ISO 11612 (A1+A2, B1, C1, E3, F1)
- EN ISO 11611 (Class 1 A1+A2)
- EN 13034
- Material weight: 350g/m²
- Sizes: XS-4XL



Go to size guide
TN for sizing

Replace ** with size for code

Code	Description
ELE9TT-JA15.0**	Two Tone Jacket 15.0cal/cm ²

TWO TONE TROUSERS 15.0CAL/CM²

Trousers with increased visibility, in a material with good protection against several molten metals and highest possible protection against molten iron.

SKINSAFE™ tested

- Two side pockets
- Hip pockets with flap
- Cargo pocket with flap
- Kneepad pockets
- Reflective stripes around legs
- Contrast stitching
- IEC 61482-2: Class 1 ATPV 15.0cal/cm²
- EN 1149-5
- EN ISO 11612 (A1+A2, B1, C1, E3, F1)
- EN ISO 11611: CL1 A1+A2
- EN 13034
- Material weight: 350g/m²
- Sizes: 34"-48" Short Leg (30")
30" -50" Regular Leg (32")
32"-40" Tall Leg (34")



Go to size guide
TN for sizing

Replace ** with size for code

Code	Description
ELE9TT-TR15.0**	Two Tone Trousers 15.0cal/cm ²

TWO TONE COVERALL 15.0CAL/CM²

Boilersuit with increased visibility, in a material with good protection against several molten metals and highest possible protection against molten iron.

SKINSAFE™ tested

- Concealed button and zip closings.
- Chest pockets with concealed zip.
- Front pockets with flap.
- Kneepad pockets with two levels.
- Hip pockets with flap.
- Elasticated waistband and actionback for free movement.
- Reflective stripes around legs, sleeves and over shoulder.
- Contrast stitching
- IEC 61482-2: Class 1 15.0cal/cm²
- EN 1149-5
- EN ISO 11612 (A1+A2, B1, C1, E3, F1)
- EN ISO 11611 (Class 1 A1+A2)
- EN 13034
- Material weight: 350g/m²
- Sizes: XS-3XL



Go to size guide
TN for sizing

Replace ** with size for code

Code	Description
ELE9TT-COV15.0**	Two Tone Coverall 15.0cal/cm ²

TWO TONE COLLECTION



This unique range of garments give class leading arc flash protection through double layers of advanced fabrics offering great user comfort levels and extremely high protection for workwear.

ARC FLASH PPE SELECTION

According to 2018 NFPA 70E page 36, Table 130.7 (C) (15) (c)

PPE CATEGORY 2

Minimum Arc Rating of 8cal/cm²



Bronze pricing

Simple garments meeting required standards to suit a lower budget.



Silver pricing

More advance garments with better fit and finish for greater user comfort.



Gold pricing

More technical features with more advanced materials for comfort and longer garment life.



LIGHTWEIGHT TWO TONE JACKET 20.0 CAL/CM²

This universally applicable multifunctional clothing offers the highest arc flash protection through a double-layer design across the front, back, arms and legs.

- HiVis protection rating: class 2
- Flame retardant blended fabric
- Excellent breathability
- Colour: Hi-Viz Yellow and Navy Blue
- IEC 61482-2 ATPV 20.0 cal/cm²
- IEC 61482-1-1
- IEC 61482-1-2
- ASTM F1959
- EN ISO 11612 (A1 +A2, B1, C1, F1)
- EN ISO 20471 (Class 2/3)
- EN ISO 11611 (Class 2 A1)
- Material Weight 350g/m²
- Sizes: S-4XL



Go to size guide BS for sizing

Replace ** with size for code

Code	Description
ELE9TT-JA20.0**	Lightweight Two Tone Jacket 20.0cal/cm ²

LIGHTWEIGHT TWO TONE TROUSERS 20.0 CAL/CM²

This universally applicable multifunctional clothing offers the highest arc flash protection through a double-layer design across the front, back, arms and legs.

- HiVis protection rating: class 1
- Flame retardant blended fabric
- Excellent breathability
- Colour: Hi-Viz Yellow and Navy Blue
- IEC 61482-2 ATPV 20.0 cal/cm²
- IEC 61482-1-1
- IEC 61482-1-2
- ASTM F1959
- EN ISO 11612 (A1 +A2, B1, C1, F1)
- EN ISO 20471 (Class 2/3)
- EN ISO 11611 (Class 2 A1)
- Material Weight 350g/m²
- Sizes: 28" - 50" Short Leg
28" -50" Regular Leg
28" -50" Tall Leg



Go to size guide BS for sizing

Replace ** with size for code

Code	Description
ELE9TT-TR20.0**	Lightweight Two Tone Trousers 20.0cal/cm ²

LIGHTWEIGHT TWO TONE BIB COVERALL 20.0 CAL/CM²

This universally applicable multifunctional clothing offers the highest arc flash protection through a double-layer design across the front, back, arms and legs.

- Flame retardant blended fabric
- Excellent breathability
- Colour: Hi-Viz Yellow and Navy Blue
- IEC 61482-2 ATPV 20.0 cal/cm²
- IEC 61482-1-2
- IEC 61482-1-1
- ASTM F1959
- EN ISO 11612 (A1 +A2, B1, C1, F1)
- EN ISO 20471 (Class 2/3)
- EN ISO 11611 (Class 2 A1)
- Material Weight 350g/m²
- Sizes: 28" - 50" Short Leg
28" -50" Regular Leg
28" -50" Tall Leg



Go to size guide BS for sizing

Replace ** with size for code

Code	Description
ELE9TT-BP20.0**	Lightweight Two Tone Bib Coverall 20.0cal/cm ²

CALL OUR TEAM FOR MORE INFORMATION ON ANY OF OUR PRODUCTS OR FOR A QUOTATION!

+44(0)1422 310456



SWITCHING SUITS



Our switching suits are all in kit form including a carry holdall in all cases. Protection ranges from 28cal/cm² to 51cal/cm². The super lightweight fabric used in the 40cal/cm² switching suit is aimed at people needing to wear for extended periods and is highly breathable and lightweight to improve wearer comfort.

ARC FLASH PPE SELECTION

According to 2018 NFPA 70E page 36, Table 130.7 (C) (15) (c)

PPE CATEGORY 3

Minimum Arc Rating of 25cal/cm²

PPE CATEGORY 4

Minimum Arc Rating of 40cal/cm²



Bronze pricing

Simple garments meeting required standards to suit a lower budget.



Silver pricing

More advance garments with better fit and finish for greater user comfort.



Gold pricing

More technical features with more advanced materials for comfort and longer garment life.



28 CAL/CM² SWITCHING SUIT KIT

Covering garments kit to protect your employees.

- Designed to wear over normal PPE or clothing
- Double layer fabric
- Storage bag included
- Colour: Navy blue
- Gloves included
- ASTM F1959 ATPV: 28.0 cal/cm²
- OSHA 1910.269
- Outer layer - 350 g/m² cotton, carbon
- Inner layer - 250 g/m² cotton, polyamid, carbon
- Sizes: S-3XL

Replace ** with size for code



Go to size guide BS for sizing



Code	Description
ELE9SS28**	28cal/cm ² Switching Suit

LIGHTWEIGHT 40 CAL/CM² SWITCHING SUIT KIT

Covering garments kit to protect your employees.

- To wear over the normal PPE or clothing
- Storage bag included
- Colour: Grey/blue
- Gloves included
- Extremely breathable according to EN 31092 / ISO 11092: RET = 7,10 m² Pa/W
- Jacket & dungarees tested to;
- IEC 61482-1-2, class 2 ATPV: 41.0 cal/cm²
- IEC 61482-1-1
- ASTM F1959
- EN ISO 11612 (A1, B1, C1,F1)
- Bib and braces to arc flash protection class 2, ATPV 40.0cal/cm²
- EN 166, "personal eye-protection requirements" with CE-labeling
- Ultra light fabric: 410g/m² (12 oz.yd²)
- Sizes: S-3XL

Replace ** with size for code



Go to size guide BS for sizing



Code	Description
ELE9SS40**	Lightweight 40cal/cm ² switching suit

45 CAL/CM² SWITCHING SUIT KIT

Covering garments kit to protect your employees.

- For the highest arc flash protection
- To wear over the normal PPE or clothing
- Storage bag included
- Colour: Navy blue
- Gloves included
- ASTM F1959, APTV: 45.0 cal/cm²
- ASTM F1506
- CSA Z462
- OSHA 1910.269
- Material weight: 350g/M² double layer fabric
- Sizes: S-3XL

Replace ** with size for code



Go to size guide BS for sizing



Code	Description
ELE9SS45**	45cal/cm ² Switching Suit

51 CAL/CM² SWITCHING SUIT KIT

CE Marked 51 cal/cm² Switching Suit, Hood, Jacket, Bib trousers and Gloves. Jacket - 88cm long jacket (Large) with zip, Flame Resistant (FR) Velcro® front closure and knitted cuffs.

- Trousers - Bib-and-brace trousers with adjustable bottom leg openings.
- Colour: Royal blue
- Gloves included
- Fabric - Flame Resistant (FR) UltraSoft®, pre-shrunk.
- ASTM F2621EC 61482-2 & CE 0339
- ATPV 51.5 cal/cm² HAF: 93.9%
- Material weight: 567g
- Sizes: S-3XL

Replace ** with size for code



Go to size guide SS for sizing



Code	Description
ELE9SS51**	51cal/cm ² switching suit kit

WET WEATHER OUTER WEAR



Waterproofs seem in conflict with protection from an electrical hazard but there are some very strong arguments for why these must be considered. Firstly it would be catastrophic for the arc rated layers to be covered by a non-arc rated rain coat that could melt or catch fire in the event of an incident. Secondly the number of cable strikes is around 150 per week and in the UK these are more than likely in wet weather and this arc protection could then be lifesaving.

ARC FLASH PPE SELECTION

According to 2018 NFPA 70E page 36, Table 130.7 (C) (15) (c)

PPE CATEGORY 2

Minimum Arc Rating of 8cal/cm²

PPE CATEGORY 4

Minimum Arc Rating of 40cal/cm²



Bronze pricing

Simple garments meeting required standards to suit a lower budget.



Silver pricing

More advance garments with better fit and finish for greater user comfort.



Gold pricing

More technical features with more advanced materials for comfort and longer garment life.



HIGH VIZ WATERPROOF SHELL JACKET 17.1 CAL/CM²

Breathable high-visibility softshell jacket.

- Two side pockets
- Two loops for radio
- Velcro adjustment in sleeves
- Hidden zipper
- Reflective tape
- IEC 61482-2 Class 1 ATPV 17.1cal/cm²
- EN 1149-5
- EN ISO 11612 (A1, B1, C1)
- EN ISO 20471
- EN 343
- EN 13034
- Material Weight: 360g/m²
- Sizes: XS-4XL
- Available in Orange/Navy or Yellow/Navy

Replace ** with size for code



Code	Description
ELE9WET-SHEL17.1-O**	High Viz Orange Waterproof Shell Jacket 17.1cal/cm ²
ELE9WET-SHEL17.1-Y**	High Viz Yellow Waterproof Shell Jacket 17.1cal/cm ²

HIGH VIZ NAVY WATERPROOF SHELL JACKET 17.1 CAL/CM²

Breathable high-visibility softshell jacket.

- Two side pockets
- Two loops for radio
- Velcro adjustment in sleeves
- Hidden zipper
- 25mm reflective tape for improved visibility
- IEC 61482-2 Class 1 ATPV 17.1cal/cm²
- EN 1149-5
- EN ISO 11612 (A1, B1, C1)
- EN 343
- EN 13034
- Material Weight: 360g/m²
- Sizes: XS-4XL

Replace ** with size for code



Code	Description
ELE9WET-SHEL17.1-N**	High Viz Navy Waterproof Shell Jacket 17.1cal/cm ²

HIGH VIZ WATERPROOF JACKET 21.1 CAL/CM²

Microflex Flame-Retardant High-Visibility Rain Jacket.

- High frequency welded seams
- Fixed hood with drawstring
- Zipper under storm flap with press studs
- Sleeves with adjustable press studs
- Two outside pockets
- With reflective tape
- Wind and waterproof
- IEC 61482-2 Class 1 ATPV 21.1cal/cm²
- IEC 61472-1-2-1 Box Test Class 1
- EN 1149-5
- EN ISO 11612 (A1, B1, C1)
- EN ISO 20471
- EN 343
- EN 13034
- Material Weight: 390g/m²
- Sizes: S-4XL
- Available in Orange or Yellow

Replace ** with size for code



Code	Description
ELE9WET-JACL21.1-O/O**	High Viz Org/Org Waterproof Jacket 21.1cal/cm ²
ELE9WET-JACL21.1-Y/Y**	High Viz Yel/Yel Waterproof Jacket 21.1cal/cm ²

HIGH VIZ/ NAVY WATERPROOF JACKET 21.1 CAL/CM²

Microflex Flame-Retardant High-Visibility Rain Jacket.

- High frequency welded seams
- Fixed hood with drawstring
- Zipper under storm flap with press studs
- Sleeves with adjustable press studs
- Two outside pockets
- With reflective tape
- Wind and waterproof
- IEC 61482-2 Class 1 ATPV 21.1cal/cm²
- IEC 61472-1-2-1 Box Test Class 1
- EN 1149-5
- EN ISO 11612 (A1, B1, C1)
- EN ISO 20471
- EN 343
- EN 13034
- Material Weight: 390g/m²
- Sizes: S-4XL
- Available in Orange/Navy or Yellow/Navy

Replace ** with size for code



Code	Description
ELE9WET-JACL21.1-O/N**	High Viz Org/Nvy Waterproof Jacket 21.1cal/cm ²
ELE9WET-JACL21.1-Y/N**	High Viz Yel/Nvl Waterproof Jacket 21.1cal/cm ²

HIGH VIZ WATERPROOF SALOPETTES 21.1 CAL/CM²

Microflex flame-retardant high-visibility bib trousers.

- Elasticated shoulder straps with buckles
- High frequency welded seams
- Press stud adjustments by the ankles
- With reflective tape
- Wind and waterproof
- IEC 61482-2 Class 1 ATPV 21.1cal/cm²
- IEC 6148-1-2 Box Test Class 1
- EN 1149-5
- EN ISO 11612 (A1, B1, C1)
- EN ISO 20471
- EN 343
- EN 13034
- Material Weight: 390g/m²
- Sizes: S-4XL
- Available in:
 - Orange
 - Yellow
 - Orange/Navy
 - Yellow/Navy



Go to size guide
LS for sizing

Replace ** with size for code

Code	Description
ELE9WET-SALL21.1-0/O**	High Viz Org/Org Waterproof Salopettes 21.1cal/cm ²
ELE9WET-SALL21.1-Y/Y**	High Viz Yel/Yel Waterproof Salopettes 21.1cal/cm ²
ELE9WET-SALL21.1-0/N**	High Viz Org/Nvy Waterproof Salopettes 21.1cal/cm ²
ELE9WET-SALL21.1-Y/N**	High Viz Yel/Nvy Waterproof Salopettes 21.1cal/cm ²



HIGH VIZ WATERPROOF TROUSERS 21.1 CAL/CM²

Microflex flame-retardant high-visibility trousers.

- High frequency welded seams
- Press stud adjustments by the ankles
- With reflective tape
- Wind and waterproof
- IEC 61482-2 Class 1 ATPV 21.1cal/cm²
- IEC 6148-1-2 Box Test Class 1
- EN 1149-5
- EN ISO 11612 (A1, B1, C1)
- EN ISO 20471
- EN 343
- EN 13034
- Material Weight: 390g/m²
- Sizes: S-4XL
- Available in:
 - Orange
 - Yellow
 - Orange/Navy
 - Yellow/Navy



Go to size guide
LS for sizing

Replace ** with size for code

Code	Description
ELE9WET-TRL21.1-0/O**	High Viz Org/Org Waterproof Trousers 21.1cal/cm ²
ELE9WET-TRL21.1-Y/Y**	High Viz Yel/Yel Waterproof Trousers 21.1cal/cm ²
ELE9WET-TRL21.1-0/N**	High Viz Org/Nvy Waterproof Trousers 21.1cal/cm ²
ELE9WET-TRL21.1-Y/N**	High Viz Yel/Nvy Waterproof Trousers 21.1cal/cm ²



HIGH VIZ ORANGE WATERPROOF JACKET 47.0CAL/CM²

Meeting numerous EN Standards including Category 4 ARC and Class 3 hi vis, this jacket offers the ultimate innovation and protection. Brilliantly designed with the wearer's safety, comfort and convenience in mind, it boasts many additional features such as seamless shoulder and a fully adjustable hood. Jacket should be worn with the waterproof salopettes as a two-piece set.

- Arc Flash protection and Flame Resistant fabric
- Elasticated inner cuffs – wind proofing
- Storm flap– wind proofing
- Taped seams – waterproof / windproof
- VELCRO® Brand fasteners on cuffs and back – improve fit
- Fully adjustable, fold away hood with Velcro – safety and comfort
- Removable Hood and compatible with helmet hood 9441
- Radio loop attaching point on left breast
- No seams on shoulder – improved durability as well as comfort whilst wearing a harness
- Mandarin collar – Maximum neck protection
- IEC 61482-2-2, class 2 ATPV: 47.0 cal/cm²
- EN 1149-5
- EN ISO 11612 (A1, B1, C1, D2, E3, F1)
- EN ISO 20471
- EN ISO 11611 (Class 2, A1)
- RIS-3279-TOM
- EN 343
- EN 13034
- Material Weight: 395gms
- Sizes: S-4XL



Go to size guide
PG for sizing

Replace ** with size for code

Code	Description
ELE9WET-JAC47.0**	High Vis Orange Waterproof Jacket 47.0cal/cm ²

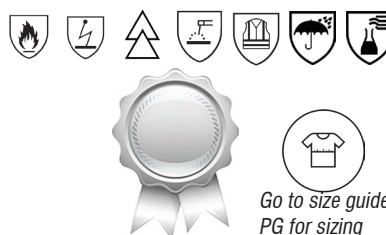
HIGH VIZ ORANGE WATERPROOF SALOPETTES 47.0 CAL/CM²

Meeting numerous EN Standards including Category 4 ARC and Class 2 hi vis, along with a collection of other EN Standards. Includes removable suspenders/braces and expandable ankle. Salopette should be worn with the waterproof jacket.

- Flame Resistant with Arc Flash protection
- 70mm double stitched reflective tape – increased durability
- Combat pocket with phone pocket – convenience and storage space
- 2 side pockets – storage space
- Side access – for use as overtrousers
- Fully lined – warmth and comfort
- Removable & adjustable suspenders
- Suspender back plate – adjustable for comfort
- IEC 61482-2-2, class 2 ATPV: 47.0 cal/cm²
- EN 1149-5
- EN ISO 11612 (A1, B1, C1, D2, E3, F1)
- EN ISO 20471
- EN ISO 11611 (Class 2, A1)
- RIS-3279-TOM
- EN 343
- EN 13034
- Material weight: 395gms
- Sizes: S-4XL

Replace ** with size for code

Code	Description
ELE9WET-SAL47.0**	High Vis Orange Waterproof Salopettes 47.0cal/cm ²



Go to size guide
PG for sizing



HIGH VIZ WATERPROOF JACKET 42.4CAL/CM²

Flame retardent lightweight waterproof jacket.

- Detachable hood
- Elasticated and velcro cuffs
- Radio Loops
- IEC 61482-2-2, class 2 ATPV: 42.4 cal/cm²
- EN 1149-5
- EN ISO 11612 (A1, B1, C1)
- EN ISO 20471
- EN ISO 11611 (Class 2, A1)
- RIS-3279-TOM
- EN 343
- EN 13034
- Material Weight: 270g/m²
- Sizes: S-4XL
- Available in Orange or Yellow

Replace ** with size for code

Code	Description
ELE9WET-JACL42.4-0**	High Vis Orange Waterproof Jacket 42.4cal/cm ²
ELE9WET-JACL42.4-Y**	High Vis Yellow Waterproof Jacket 42.4cal/cm ²



Go to size guide
LS for sizing



HIGH VIZ WATERPROOF SALOPETTES 42.4 CAL/CM² SWITCHING SUIT KIT

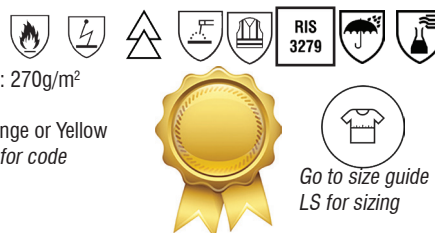
Flame retardent lightweight waterproof bib trousers.

- Detachable braces
- Tool pocket on left and right thigh
- Two front pockets with velcro fastening
- Elasticated waist
- Windproof, waterproof and breathable
- IEC 61482-2-2, class 2 ATPV: 42.4 cal/cm²
- EN 1149-5
- EN ISO 11612 (A1, B1, C1)

- EN ISO 20471
- EN ISO 11611 (Class 2, A1)
- RIS-3279-TOM
- EN 343
- EN 13034
- Material Weight: 270g/m²
- Sizes: S-4XL
- Available in Orange or Yellow

Replace ** with size for code

Code	Description
ELE9WET-SALL42.4-0**	High Vis Orange Waterproof Salopettes 42.4cal/cm ²
ELE9WET-SALL42.4-Y**	High Vis Yellow Waterproof Salopettes 42.4cal/cm ²



Go to size guide
LS for sizing



FACE AND HAND PROTECTION



The commonly overlooked area is often in providing face and hand protection to match the garments worn by the user. We carry vast stocks of this range with variants to suit user requirements and whilst most people prefer the non-tint new technology visors we also stock the old faithful green visors. Increasingly popular are the integrated helmet/visor option which is a better one to overcome user wearing reluctance.



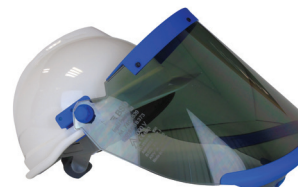
CLEAR NON-TINT VISORS

A revolutionary design of Arc Rated visor with a barely noticeable level of tint

- Gives a near perfect colour reproduction of 95%
- Arc Flash protection is provided by special coating to reflect the thermal radiation
- Both models incorporate a transparent chin guard for improved ease of use
- 12cal/cm² and 26cal/cm² options available
- Complete kit with helmet
- ASTM F2178
- EN 166: 2001, EN 170: 2002
- GS-ET-29: Class 2



ELEHC12-ATPV



ELEHC26-ATPV

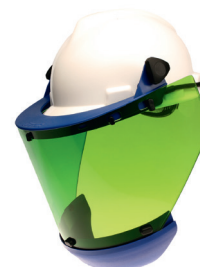
Code	Description
ELEHC12-ATPV	12cal/cm ² Arc Rated helmet and visor
ELEHC26-ATPV	26cal/cm ² Arc Rated helmet and visor



GREEN TINTED VISOR

Very popular green tinted with blue chin guard. The protection is provided by the particles built into the polycarbonate that absorb the radiation.

- ASTM F2178 – 12cal/cm²
- DIN EN 166: 2001 and DIN EN 170: 2002
- GS-ET-29: Class 2
- Complete kit with helmet



Code	Description
ELE9HE12-ATPV	12cal/cm ² Arc Rated helmet and visor



HELMET WITH INTEGRATED FACE SHIELD

Permits the user to work on live circuits with a simple drop down Arc Rated visor that retracts into the helmet when not needed.

- Gives a near perfect colour reproduction of 95%
- 14cal/cm² and 28cal/cm² models
- GS-ET-29: Class 2



Code	Description
ELE9HINT14	14cal/cm ² Arc Rated helmet with face shield
ELE9HINT22	28cal/cm ² Arc Rated helmet with face shield



MSAV-GARD950

ABS safety helmet with integrated face shield.

- Tested to EN 397 440 V AC and EN 50365 1000 V AC
- ATPV rating of 3.2cal/cm²
- Fitted premium anti-fog/anti-scratch visor that comfortably fits over all corrective or safety glasses
- Safe for use in ATEX/explosive environments
- Soft storage bag included
- Visor retracts fully into helmet for convenience when not needed
- **Optional arc flash ear flaps can be fitted



**optional

Code	Description
MSAV-GARD950	Helmet with Arc rated face shield

ELE62

- Untinted visor, good ventilation
- Protects against electrical short-circuit arcs, hot solids and molten metal
- **Not arc rated**

Code	Description
ELE62	Electricians Visor



FACE AND HAND PROTECTION



The hood is a great solution to remove the bulk of the visor/helmet combination where danger from falling objects is not present.

We have the largest stocks of arc rated gloves in the country and our range spans from the lower rated under gloves to the gauntlet style gloves up to 45cal/cm².

Completing the protection range are the two balaclavas where the double layer 34cal/cm² gives excellent protection at a great price.

ARC FLASH PPE GRAB BAG

All equipment needed to complement arc rated clothing when entering an area requiring PPE to Arc Class 2.

Featuring:

- 12cal/cm² non-tint visor and helmet
- 12.1cal/cm² balaclava
- 12.1cal/cm² knitted gloves - Large
- Holdall kit bag



Code	Description
KITILE9-12.1	Arc Flash PPE face and hands kit - 12cal/cm ²

ARC FLASH HOOD

Good alternative to the bulky helmet and visor.

- 14.0cal/cm² and 25.0cal/cm² options available
- Visor size 22 x 14 cm
- GS-ET-29: Class 2 WLBP = 630 kJ
- ASTM F2178: ATPV 25.0 cal/cm² HRC 2



Code	Description
ELE9HD13	Arc protection hood HRC 2 14.0 cal/cm ²
ELE9HD28	Arc protection hood HRC 2 25.0 cal/cm ²

BALACLAVA SINGLE LAYER 12.1 CAL/CM²

- Work wear for electrical industry
- Garment tested to CE 0339
- Permanently Flame Resistant (FR) UltraSoft® fabric, 220 g/m²
- IEC 61482-1-1 ATPV 12.1cal/cm²
- EN 340; EN ISO: 11612
- Available colours: Navy Blue
- Available sizing: one size fits all



Code	Description
ELE9BA12	12.1 cal/cm ² Balaclava



ARC FLASH GLOVES 18.0 CAL/CM²

Caution: These gloves have no insulating properties! Separate insulating gloves are necessary for performing live work.

- Fault arc protection class 2 or 395 kJ ATPV 18.0 cal/cm²
- EN 388:2003; EN 407:2004
- Protection against thermal danger of the electric arc
- Comfortable fit via soft and flexible leather
- Very soft leather palms for good grip and better touch
- Available colours: White/Navy
- Available sizing: 8 – 12 *replace ** with size for code.*



Code	Description
ELE9GA18**	Arc Flash Gloves 18.0cal/cm ²

BALACLAVA DOUBLE LAYER 34.0 CAL/CM²

The balaclava is used in combination with an arc rated face protection shield as part of PPE to protect against the thermal hazards of an electric arc. It effectively protects the neck and back of the head that are vulnerable to the radiation emitted during an arc flash incident.

- For wearing under our range of face shields
- For a higher arc flash protection of the head (360 degree protection)
- Double layer fabric: 7.8 oz/yd²
- ASTM F1959: ATPV: 34.0 cal/cm² (fabric rating)
- ASTM F2178: ATPV: 26 cal/cm² (together with ELE9HINT22)
- Colour: dark blue
- Single size



Code	Description
ELE9BA34	34.0 cal/cm ² Balaclava



ARC FLASH GLOVES 31.0 AND 45.0CAL/CM²

Caution: These gloves have no insulating properties! Separate insulating gloves are necessary for performing live work.

- IEC 61482-1-1: ATPV 31 cal/cm²
- IEC 61482-1-1: ATPV 45 cal/cm²
- IEC 61482-1-2:2007 class 2
- EN 388:2003; EN 407:2004
- Very soft leather palms for good grip and better touch
- Available colours: White/Navy
- Available sizing: 8 – 12 *replace ** with size for code.*



Code	Description
ELE9GA31**	Arc Flash Gloves 31.0cal/cm ²
ELE9GA45**	Arc Flash Gloves 45.0cal/cm ²

ARC RATED KNITTED GLOVES 8.7 CAL/CM²

Lightweight arc rated gloves to wear as they are or under Insulating Electrical Gloves to give added arc flash protection and prevent injury of gloves melting in event of an arc flash incident. **Attention: there are no insulating properties! Must be used with our Insulating Gloves for electric shock protection.**

- IEC 61482-1-2 Class 1 WLBP = 168 kJ
- IEC 61482-1-1 ATPV 8,7 cal/cm² HRC 2
- Approx. 280 mm length
- Approx. 46 g (pair) weight
- 79 % Nomex®, 14 % ViscoseFR, 5 % Kevlar®, 2 % Anti Static
- IEC 61482-1-2: 2007
- IEC 61482-1-1: 2009
- EN 388: 2003 (OX2X)
- EN 407: 2004 (4121XX)
- Available colours: Black
- Available sizing: 8 – 12 *replace ** with size for code.*



Code	Description
ELE9GL8.7**	8.7 cal/cm ² Knitted gloves



ARC RATED KNITTED GLOVES 12.1 CAL/CM²

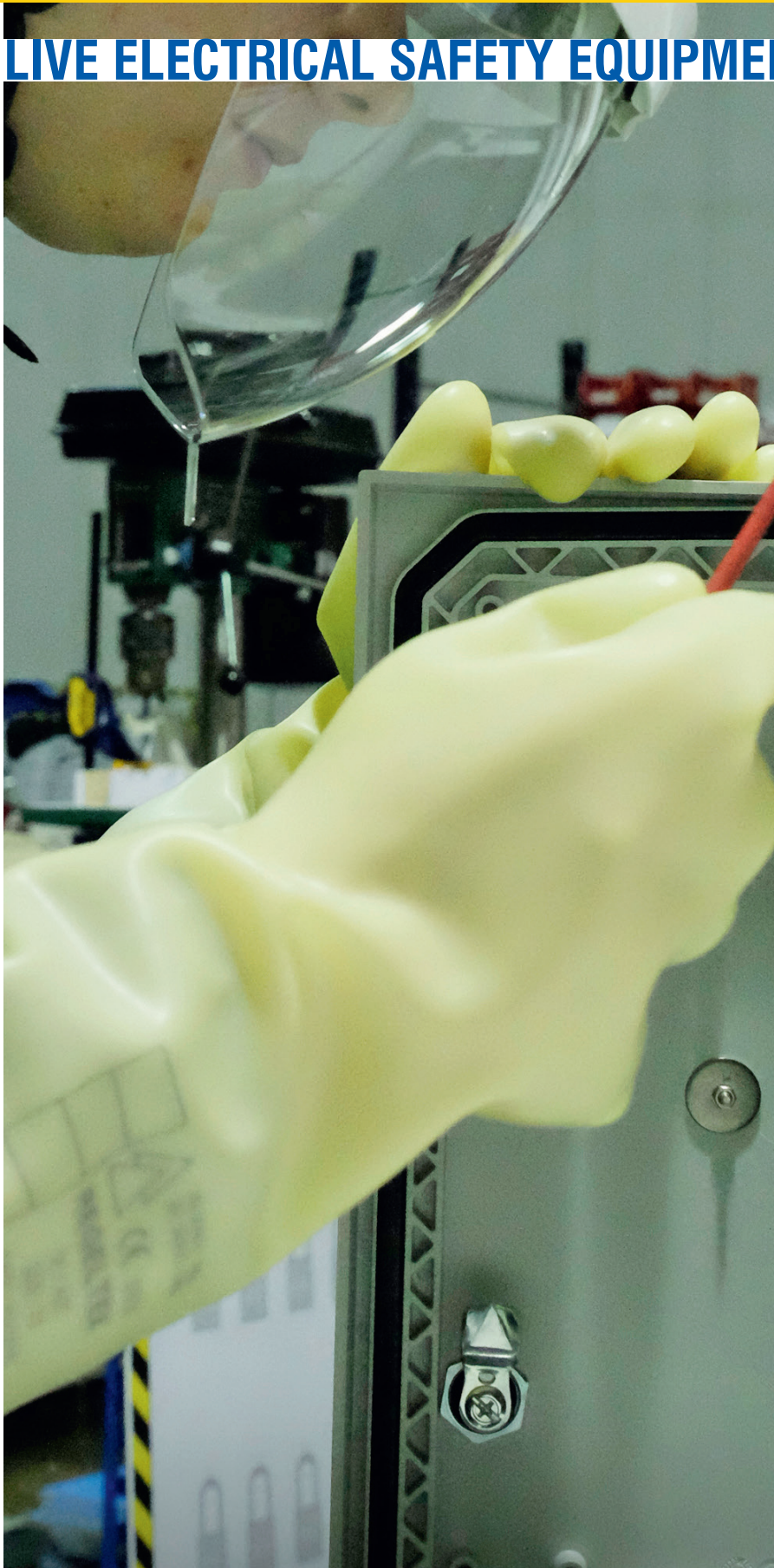
Attention: there are no insulating properties! Must be used with our Insulating Gloves for electric shock protection

- Permanently Flame Resistant (FR) UltraSoft® Rib Knit fabric, 220 g/m².
- Fabric tested to IEC 61482-1-1; NFPA 70E; ASTM F1506; ASTM F1959; OSHA 1910.269; EN 340; EN ISO: 11612 & OEKO TEX STD. 100.
- Arc rating 12.1 cal/cm²
- Garment tested to CE 0339
- HAF² 81.6%
- Available colours: Navy Blue
- Available sizes: S – XL



Code	Description
ELE9GL12	12.1 cal/cm ² Knitted gloves

LIVE ELECTRICAL SAFETY EQUIPMENT



This section includes our best selling MV/HV safety equipment and is part of an extensive range of products supplied by Reece Safety.

COTTON UNDERGLOVES

- Single size.
- 250mm long.

When ordering please replace the asterisk (*) with the product size.



Code	Description
ELE40/*	Cotton undergloves

CLEAR ELECTRICAL SAFETY GLOVES STORAGE BOX

- Transparent glove storage box suitable for a pair of our range of electrical safety gloves.
- Dimensions: 370mm x 170mm x 50mm.



Code	Description
ELE16	Glove storage box

GLOVE STORAGE BAG

- Glove storage bag to suit a pair of our range of electrical safety gloves.
- Dimensions: 410mm x 200mm x 70mm.



Code	Description
ELE16A	Glove storage bag

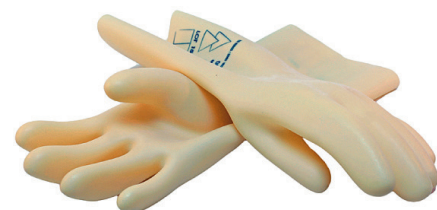
ELECTRICAL SAFETY INSULATING GLOVES

See page 39 for our glove size guide.

- Fully insulating gloves test stamped for working voltages from 500V to 36,000V.
- Good flexibility and sensitivity in all electrical applications.
- Manufactured to EN 60 903.
- Pneumatic glove tester available to carry out your own air inflation test as recommended by EN60903 and IEC903 standards (for class 00 and class 0).
- Electrical re-testing service available (Class 1 and above).

When ordering please replace the asterisk (*) with the product size.

Code	Description	Length	Thickness	Sizes	Test Voltage	Working Voltage	Class
ELE10/*	Insulating gloves	360mm	0.5mm	9/10/11	2,500V	500V	00
ELE11/*	Insulating gloves	360mm	1.0mm	9/10/11	5,000V	1,000V	0
ELE12/*	Insulating gloves	360mm	1.5mm	9/10/11	10,000V	7,500V	1
ELE13/*	Insulating gloves	360mm	2.3mm	9/10/11	20,000V	17,000V	2
ELE14/*	Insulating gloves	360mm	2.9mm	9/10/11	30,000V	26,500V	3
ELE32/*	Insulating gloves	410mm	3.6mm	9/10/11	40,000V	36,000V	4



COMPOSITE INSULATING GLOVES

See page 39 for our glove size guide.

These latex gloves are chlorinated inside and the outer orange polychloroprene layer provides excellent mechanical resistance which avoids the need for heavy leather overgloves.

- Manufactured and tested to EN 60 903: 2003 ; CEI 903 : 2002.
- The chemical formulation of the exterior cladding ensures exceptional grip in humid environments.
- Telltale signs of damage if the white inner layer is exposed due to mechanical damage.
- Fitted shape makes flexing easier while ensuring a high level of protection.
- A pair of mittens is delivered with each pair of gloves for greater comfort.

Code	Length	Thickness	Sizes	Working Voltage	Class
ELE80/*	360mm	2.1mm	8,9,10,11,12	1,000V	0
ELE81/*	360mm	2.6mm	8,9,10,11,12	7,500V	1
ELE82/*	360mm	3.1mm	8,9,10,11,12	17,000V	2
ELE83/*	360mm	3.6mm	8,9,10,11,12	26,500V	3
ELE84/*	410mm	4.8mm	8,9,10,11,12	36,000V	4



LEATHER OVERGLOVES

- Leather overgloves to suit the Reece range of insulating electrical safety gloves to prevent mechanical damage to the latex gloves.

When ordering please replace the asterisk (*) with the product size.



Code	Description
ELE39/*	Leather overgloves

To ensure you order the correct overgloves to fit your insulating glove order please refer to the table below -

CLASSES 00, 0 & 1	OVERGLOVE SIZES	CLASSES 2, 3 & 4
Size 8	8	-
Size 9	9	Size 8
Size 10	10	Size 9
Size 11	11	Size 10
-	12	Size 11

PNEUMATIC GLOVE TESTER

- Pneumatic glove tester available to carry out your own air inflation test as recommended by EN60903 and ICE903 standards (for class 00 and class 0)



Code	Description
ELE15	Pneumatic glove tester

GLOVE RE-TESTING

- Glove re-testing is for class 1/2/3/4 gloves only.
- Gloves must have been supplied by Reece Safety originally.

Code	Description
ELE17-0	Re-testing of gloves (Class 00 to Class 2)
ELE17-3	Re-testing of gloves (Class 3 to Class 4)



LIVE ELECTRICAL SAFETY EQUIPMENT



SAFETY RESCUE HOOKS

Used for the retrieval of victims of electric shock, safeguarding the life of the rescuer. Two sizes available, 25mm diameter x 1000mm long for use with up to 1kV system voltage and 35mm diameter x 1950mm long for use with up to 60kV system voltage. Required in all live line areas as part of Health & Safety risk assessment.



Hook stations
Offer safe storage for the hook and should be placed in a prominent and easily accessible position near to the 'live' site.

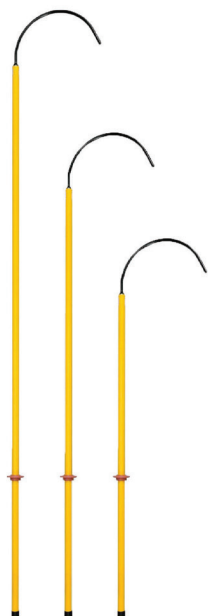
Code	Description
ELE18	1kV rescue hook
ELE18A	1kV rescue hook station
ELE19	60kV rescue hook
ELE19A	60kV rescue hook station

CHECK OUT OUR WEBSITE FOR UP TO DATE PRICES!
www.reecesafety.co.uk



SAFETY RESCUE HOOKS

Large hook insulated rescue sticks which allow quick rescue of an electrified casualty in the event of an accident. Wall fittings included.



Code	Description
RCS45	45kV rescue stick 1.65m rated to 45kV
RCS90	90kV rescue stick 2.15m rated to 90kV
RCS225	225kV rescue stick 2.43m rated to 225kV

RESCUE HOOK PANEL

Highly visible Rescue Hook Station to allow rapid intervention in the event of an electrical incident. Station provides secure hook storage for easy access near to the "live" site. Live Saving First Aid for HV Electric shock instructions printed on panel.

- W 800 mm x H 600 mm.
- 45kV, 90kV and 225kV versions available.
- **Hook not included.**

Code	Description
RCS45A	Rescue hook panel for 45kV rescue hook
RCS90A	Rescue hook panel for 90kV rescue hook
RCS225A	Rescue hook panel for 225kV rescue hook



RUBBER INSULATING SHROUDING (IEC AND ASTM GRADES)

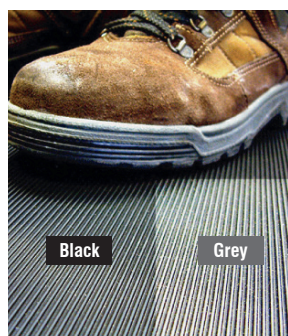
- Used to protect engineers working with live voltages up to 1,000V.
- Applications in underground cable jointing, overhead conductors and link box maintenance.
- ASTM grade (ELE51 and ELE54) approved to ENTS 43-103 and in 1mm thickness.
- IEC grade (ELE55 and ELE56) in 1.5mm thickness.
- Easily installed using fixing clamps (ELE04 and ELE04S).
- Lengths up to 10M available

Code	Description
ELE51	1m x 915mm x 1mm ASTM rubber shrouding
ELE54	10m x 915mm x 1mm ASTM rubber shrouding
ELE55	1m x 1000mm x 1.5mm IEC rubber shrouding
ELE56	10m x 1000mm x 1.5mm IEC rubber shrouding



LV AND HV SWITCHBOARD RUBBER MATTING

- For use in front of open switchboards or live equipment.
- Safety against electrical shock.
- Used in many industrial plants and factories.
- Flame retardant, oil and acid resistant.
- Matting is available in standard roll lengths or 'by the metre' to suit your requirements.
- Fluted surface for all Matting with exception of ELE37* which has a "fabric" finish.
- 1,200mm widths available – please call for details.
- ASTM rated matting available on request.



When ordering please replace the asterisk (*) in the product code with 'R' for ROLL or 'M' for METRE(S).

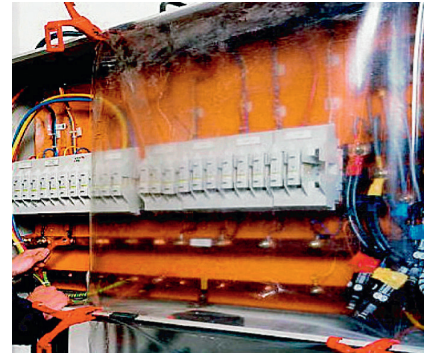
Code	Description	Test Voltage	Working Voltage	Width	Thickness	Length	Colour
ELE27*	IEC61111 Class 0	5kV	1,000V	1000mm	3mm	10m	Black
ELE28*	IEC61111 Class 0	5kV	1,000V	1000mm	6mm	10m	Grey
ELE30*	IEC61111 Class 2	20kV	17,000V	1000mm	3mm	10m	Grey
ELE37*	IEC61111 Class 3	30kV	26,500V	1200mm	3mm	10m	Grey
ELE31*	IEC61111 Class 4	40kV	36,000V	1000mm	4.5mm	10m	Grey

LIVE ELECTRICAL SAFETY EQUIPMENT



TRANSPARENT INSULATING SHROUDING

- Used to protect engineers working with live voltages up to 1,000V.
- Ideal for use in front of open switchboards or control panels.
- Manufactured to VDE 0680/1.
- Easily installed using fixing clamps (ELE04 and ELE04S).
- Prevents accidental contact with live terminals.
- Full length roll of up to 50m available - please call for details



Code	Description
ELE01	1m x 1.4m x 0.5mm transparent shrouding
ELE02	10m x 1.4m x 0.5mm transparent shrouding

INSULATING FIXING CLAMPS

- Made of non brittle plastic.
- Rubber contacts in jaw to protect insulating material.
- Insulated to 1,000V.
- For use with Insulating shrouding.



Code	Description
ELE04	Safety clamp long – 160mm with 65mm jaw opening
ELE04S	Safety clamp short – 140mm long with 45mm jaw opening

DIELECTRIC SAFETY BOOTS

- Certified protection against electric shock.
- Steel toecap, electrical insulating.
- Conforms to EN345-1.SB and EN50321 Class 0.
- Certified for use up to 1000V AC and 1500V DC (class 0).
- Oil and chemical resistant sole.
- Overall boot tested to 20kV.
- Sizes 6 to 13 (European 40 to 47).



Code	Description
ELE20/*	Dielectric safety boots

Replace the asterisk (*) in the product code with the required size.

SAFETY INSULATING PLATFORM

Made from high impact polypropylene in accordance with the UNE 204001 standard. Non-slip platform and rubber feet for greater slip resistance on the floor, plus protection from wear. Platform 525 x 525mm. Rated 45kV.



Code	Description
SP45K	Insulating platform 45kV

24KV SUBSTATION RESCUE KIT

Essential lifesaving electrical intervention equipment contained in rugged wall mounted enclosure.

- Insulated Rescue Hook rated to 24kV.
- Voltage detector on insulated pole - 5-36kV.
- Safety Insulating Platform rated to 45kV.
- Insulated cable cutters with 30mm jaws rated to 25kV.
- Class 3 (26.5kV) Electrical Insulating safety gloves with case and Talcum powder.
- Dielectric Insulating Safety boots - tested to 20kV.
- IP66 grade wall mounted storage box.
- Front panel mounted Emergency Resuscitation Instructions.

Individual components can be changed to suit specific applications and customer requirements.

Dimensions 800H x 600W x 300D mm.

Code	Description
SRK24	Wall mounted 24kV Substation Rescue Kit



CABLE AVOIDANCE TOOLS

Many customers work on sites where historical plans have been found to be wrong and the resultant accidental discovery of live cables and service is putting lives at risk and, in the very least, potentially very costly. We now offer a range of products to detect buried pipes and cables before excavation.



RSCXL4 DATA LOGGING CABLE AVOIDANCE TOOL

- Four modes of detection:
 - Power
 - Radio
 - 33kHz + 131kHz from SGA4 or SGV4-D Signal Generators or Sondes
 - All Scan.
- Data Logging.
- Automatic Daily Self-Test generating a System Validation Certificate.
- USB connectivity.
- Batteries included.
- Network Rail Approved.

To be used in conjunction with our RSSGA4 Signal Generator



RSDXL4 DATA LOGGING DEPTH MEASUREMENT CABLE AVOIDANCE TOOL

- Four modes of detection:
 - Power
 - Radio
 - 33kHz + 131kHz from SGA4 or SGV4-D Signal Generators or Sondes
 - All Scan.
- Depth Measurement.
- Data Logging.
- Automatic Daily Self-Test generating a System Validation Certificate.
- USB connectivity.
- Batteries included.
- Network Rail Approved.

To be used in conjunction with our RSSGA4 Signal Generator

RSSGA4 SIGNAL GENERATOR

- One Watt.
- High/Low Power.
- Pulsed/Continuous 33kHz and 131kHz signal output.
- Supplied complete with: Direct Connection Leads, Connection Magnets,
- Earth Stake & Auxiliary 10 metre Earth Lead.
- Batteries included.

To be used with EITHER RSCXL4 or RSDXL4D (above)



Code	Description
RSCXL4	Data Logging Cable Avoidance Tool
RSDXL4D	Data Logging Depth Measurement Cable Avoidance Tool
RSSGA4	Signal Generator

SIZE GUIDES

TOPS AND JACKETS - CODE PW

SIZE	XXS	XS	S	M	L	XL	XXL	3XL	4XL	5XL
NECK (INCH)	-	-	-	14.5-15	15.5-16	16.5	17-17.5	18-19	19.5-20	-
WAIST (INCH)	-	26-28	30-32	33-34	36-38	40-41	42-44	46-47	48-50	52-56
CHEST (INCH)	28-30	32-34	36-38	40-41	42-44	46-48	50-52	54-55	56-58	60-64

TROUSERS, COVERALLS AND BIB AND BRACES - CODE PW

SIZE	XXS	XS	S	M	L	XL	XXL	3XL	4XL	5XL
WAIST (INCH)	-	26-28	30-32	33-34	36-38	40-41	42-44	46-47	48-50	52-56
CHEST (INCH)	28-30	32-34	36-38	40-41	42-44	46-48	50-52	54-55	56-58	60-64
INSIDE LEG <i>SHORT LEG</i> (INCH)	29	29	29	29	29	29	29	29	29	29
INSIDE LEG <i>REGULAR LEG</i> (INCH)	31	31	31	31	31	31	31	31	31	31
INSIDE LEG <i>TALL LEG</i> (INCH)	33	33	33	33	33	33	33	33	33	33
INSIDE LEG <i>EXTRA TALL LEG</i> (INCH)	36	36	36	36	36	36	36	36	36	36

BASELAYER TOPS AND LEGGINGS (SNUG FIT) - CODE PG

SIZE	XS	S	M	L	XL	2XL	3XL	4XL	5XL
CHEST (TOP) (INCH)	34.6	37.8	40.9	44.1	47.0	50.4	53.5	56.7	59.9
WAIST (LEGGINGS) (INCH)	26.8	29.9	33.1	36.2	39.4	42.5	45.7	48.8	51.9

T-SHIRT AND SWEATSHIRTS - CODE PG

SIZE	XS	S	M	L	XL	2XL	3XL	4XL	5XL
CHEST (INCH)	37.8	40.1	42.5	44.9	48.0	51.0	54.3	57.5	60.5

JACKETS - CODE PG

SIZE	XS	S	M	L	XL	2XL	3XL	4XL	5XL
CHEST (INCH)	43.3	44.9	48.8	52.8	55.7	60.6	64.6	68.5	72.4

TROUSERS - CODE PG

SIZE	30"	32"	34"	36"	38"	40"	42"	44"	46"	48"	50"	52"
WAIST (INCH)	30.0	32.0	34.0	36.0	38.0	40.0	42.0	44.0	46.0	48.0	50.0	52.0
INSIDE LEG <i>SHORT LEG</i> (INCH)	30	30	30	30	30	30	30	30	30	30	30	30
INSIDE LEG <i>REGULAR LEG</i> (INCH)	32	32	32	32	32	32	32	32	32	32	32	32
INSIDE LEG <i>TALL LEG</i> (INCH)	34	34	34	34	34	34	34	34	34	34	34	34

COVERALLS - CODE PG

SIZE	38"	40"	42"	44"	46"	48"	50"	52"	54"	56"	58"	60"
WAIST (INCH)	36-38	38-40	40-42	42-44	44-46	46-48	48-50	50-52	52-54	54-56	56-58	58-60
INSIDE LEG <i>SHORT LEG</i> (INCH)	29.5	29.5	29.5	29.5	29.5	29.5	29.5	29.5	29.5	29.5	29.5	29.5
INSIDE LEG <i>REGULAR LEG</i> (INCH)	31.5	31.5	31.5	31.5	31.5	31.5	31.5	31.5	31.5	31.5	31.5	31.5
INSIDE LEG <i>TALL LEG</i> (INCH)	33.5	33.5	33.5	33.5	33.5	33.5	33.5	33.5	33.5	33.5	33.5	33.5



COVERALL - CODE AF									
SIZE	XS	S	M	L	XL	XXL	3XL	4XL	5XL
NECK (INCH)	13.7-14.1	14.5-14.9	15.3-15.7	16-16.5	16.9-17.3	17.7-18	18.5-18.8	19.2-19.6	20-20.4
CHEST (INCH)	30.7-33	33.4-36.2	36.6-39.3	39.7-42.5	42.9-45.6	46-48.8	49.2-51.9	52.3-55.1	55.5-58.2

BASELAYER TOPS AND JACKETS - CODE TN							
SIZE	XS	S	M	L	XL	XXL	3XL
CHEST SIZE (INCH)	35-36	37-38	39-40	41-42	43-44	45-46	47-48

TROUSERS - CODE TN											
SIZE	30	32	33	34	36	38	40	42	45	48	50
WAIST (INCH)	30"	32	33	34	36	38	40	42	45	48	50
INSIDE LEG <i>SHORT LEG</i> (INCH)	30"	30"	30"	30"	30"	30"	30"	30"	30"	30"	-
INSIDE LEG <i>REGULAR LEG</i> (INCH)	32"	32"	32"	32"	32"	32"	32"	32"	32"	32"	32"
INSIDE LEG <i>TALL LEG</i> (INCH)	-	34"	34"	34"	34"	34"	34"	-	-	-	-

COVERALLS - CODE TN									
SIZE	XS	S	M	L	XL	XXL	3XL	4XL	5XL
CHEST SIZE (INCH)	35-36	37-38	39-40	41-42	43-44	45-46	47-48	49-50	51-52
INSIDE LEG <i>REGULAR LEG</i> (INCH)	32"	32"	32"	32"	32"	32"	32"	32"	32"
INSIDE LEG <i>TALL LEG</i> (INCH)	-	-	34"	34"	34"	34"	34"	34"	34"

SWITCHING SUIT KITS - CODE BS						
SIZE	S	M	L	XL	XXL	3XL
CHEST (INCH)	33-35	37-38	40-41	43-44	46-47	46.5-50.5
WAIST (INCH)	29-30	32-33	35-37	39-40	43-45	47-48.5
INNER LEG LENGTH (INCH)	31	31.5	31.6	32	33	33

SWITCHING SUIT KITS - CODE SS								
SIZE	S	M	L	XL	XXL	3XL	4XL	5XL
CHEST (INCH)	44	47	50.3	53.5	56.7	59.8	62.9	66
WAIST (INCH)	45.66	47.2	48.8	50.39	52	53.5	55	57
INNER LEG LENGTH (INCH)	26.7	27	27.5	27.9	28.3	28.7	28.7	28.7

WATERPROOFS - CODE LS							
SIZE	S	M	L	XL	XXL	3XL	4XL
CHEST (INCH)	36-37.7	39.3-40.9	42.5-44	45.6-47.2	48.8-50.3	52-53.5	55-56
WAIST (INCH)	31-33	34-36	37-39	40-42	44-45	47-48	50-52
LENGTH (INCH)	67-67.7	68.5-69.2	70-70.8	71.6-72.4	73.2-74	74.8-75.5	76.3-77



What glove do you need?

Wrap a measuring tape around your palm to determine your glove size

Recommended size	6	7	8	9	10	11	12
Hand measurement	14cm	16cm	18cm	21cm	24cm	26cm	28cm



Life Critical Safety Products

REECE SAFETY PRODUCTS LTD

Unit B9, Lowfields Close, Lowfields Business Park, Elland, West Yorkshire HX5 9DX

T +44 (0)1422 310456 F +44 (0)1422 311070

email sales@reecesafety.co.uk www.reecesafety.co.uk

+44(0)1422 310456

sales@reecesafety.co.uk

www.reecesafety.co.uk